

75
Years

**United
Way**



Maui United Way

CHANGING LIVES & IMPROVING OUR COMMUNITY

IMPACT REPORT 20|21



MAUI UNITED WAY

GIVE. ADVOCATE. VOLUNTEER.

LIVE UNITED

CHAIRMAN'S MESSAGE



Aloha MUW 'Ohana,

2020 was indeed a challenging year for the Maui community. The pandemic stretched resources, and its real economic, emotional, and social toll has been immeasurable. For those of us that remained employed during this challenging time, it was truly our time, and our responsibility to give back in meaningful ways. For all of you who rose up to help all of us meet this challenge, MAHALO! Without your generosity our MUW Ohana would not have been able to continue its great work, and especially at a time when it was indeed most needed.

Furthermore, as a result of the crisis, Maui United Way's Safety Net program was launched March of 2020 with the support of our Board of Directors and team to provide gap funding for nonprofits supporting those being affected by the crisis. Within two weeks the tremendous staff and supporting Directors of MUW were able to get much needed funds injected into the community. As a result, we have been able to act quickly

and continue to adjust and adapt as our community's needs have changed. With some of the highest unemployment in the country over this past year, we know that this is not over. We are going to have to continue to think outside the box and ensure that every resource we have available is used in the best way. We wouldn't be able to do this without the trust of our volunteers, our donors, our partners, and of course without the amazing work being done by a network of nonprofits that have, and will continue to, work to provide a hand up to those that need it most.

Beyond just the pandemic safety net, because of you, we were able to provide the many needed social services to our Maui community through programs in Health, Education and Income. Your generosity and volunteerism resulted in more than 1,000 volunteer hours and over \$600,000 in contributions to the 2020-2021 Maui United Way Campaign in support of vital programs delivered through our Partner Agencies. Due to the efficiency of the Maui United Way model, we are pleased to announce that the 2020-2021 contributions to agencies will continue as planned without disruption; and further, the Partnership Committee and Board collectively have put into place policies and procedures to allow agencies to adapt to the crisis at hand and deliver the funds in flexible ways that still meet the present needs.

LIVING UNITED involves all of us – our Partner Agencies that provide vital services to the neediest in our community; our workplace campaigns, corporate sponsors, major donors and foundations that contribute the crucial funds; our volunteers who are making a difference by offering their time and talents in service; and our Board and Staff who must provide a workable vision and leadership to fulfill Maui United Way's mission. Despite Maui being considered a paradise by most people in the world, there are still many Maui residents in need. Homelessness, hunger, unaffordable healthcare, domestic abuse, and drugs continue to plague our island. Because of your generosity and the tireless efforts of our partner agencies we are making an impact in our fellow citizen's lives. We look forward to the future as a strong and resilient organization.

All the best to you and your 'Ohana,

Simon Poole

Chairman, Board of Directors

OUR MISSION

OUR MISSION IS TO EMPOWER OUR MAUI COMMUNITY THROUGH CARING PARTNERSHIPS THAT ENRICH PEOPLE'S LIVES.

PRESIDENT'S MESSAGE



Our community has been marked with change, reflection, challenges, and now, a bit of hope. As I wrap up my second year at Maui United Way, I've learned to work a little bit differently, offer a hand up when I can, ask for help when I didn't think I'd need it, and continue to put 100% of ourselves as a team into everything we do as so many of you have.

During a crisis we tend to contract our circles and try our best to ensure we take care of ourselves, understandably so. What we've seen here in the county has been something completely different; we've seen our community come together and help provide the hand up that all of us have needed at some point this past year. With the support and trust the community has shown Maui United Way, we've learned that you can do more good together than going it alone.

At every corner your Maui United Way has reacted as best we could to address the ever changing needs that have arisen this year. Along with our partners, volunteers, and community members we've made great strides to enact positive change in the continuing fight for education, financial stability, and the health of every person in the county of Maui. In partnership with Hawaii Community Foundation, we helped supply over 120,000 pieces of PPE to any nonprofit in the County that needed it to help prevent the spread of COVID. Along with our long-time partner Hawaiian Electric and other United Ways in the state, we helped with past due utility bills paying over \$250,000 to those needing it most. We answered over 5,000 calls with our new local 211 representative Tatiana Medeiros connecting those needing support to those providing it. In addition, we also awarded over \$430,000 to our trusted partners via our Community Impact Grants. In total, your Maui United Way provided almost 100,000 people a hand up this year. But how can we do more with less as we plan for the future?

To help us answer this question, we recently collected reporting and feedback from over 40 of our non-profit partners, and we learned a lot more than we had expected to. We were able to see solid data on how, over the last year, that adaptation and reactionary support were key to ensuring our community kept its head above water. We saw agencies completely change their programming due to social distancing needs and we saw others that had to exponentially grow their work to ensure so many had food security and a roof over their heads. We learned that there were new ways of working that could actually be more productive. We also learned that the mental health issues we were facing ourselves were not being faced alone.

Economic pains, physical and mental health, and the notion of equality have all been present this past year plus in the issues we've faced. I feel that as we move forward, it's also a time for us to have some difficult conversations as we ask ourselves how can we do more good for all. Your Maui United Way along with a diverse group of partners is working to develop a better approach to inclusion, equity, and diversity. This approach will give a platform to our partner agencies as well as their boards to bring people and voices to the table that sometimes might not normally speak up for their community's needs. We have such a unique opportunity right now to build a better future for all, and with your help we plan on weaving together this work to better address the entire community's needs across Maui, Lāna'i, and Moloka'i. Seeing the changing gaps in our community needing to be addressed, your Maui United Way is now looking to the future on how best to serve our county as a whole with fewer resources. With all of our partner's help, we are automating our reporting processes to collect and interpret data to measure how our supporter's investments in the county of Maui can have the best impact. We're building out systems now that can compile historical data on social programs and how we can begin to see trends within this paradise we call home to use the limited resources we have more efficiently. United Way Worldwide is working with us to create this model that can be shared across the country. Looking to the future, what would you wish for your children, your grandchildren? These are the questions we are now able to ask as we step away from this latest crisis and begin planning for the future. With your continued help, support, trust, and time, I feel confident we can provide a more equitable future for all.

Yesterday, today, and tomorrow, we're always going to be here for our community. And now, we are going to be better than ever thanks to you and all of our partners. Now is not the time to take a break, it's time to put our foot on the acceleration and continue to do more good. Are you ready to give a hand up with us?

'A'ohe hua o ka ma'i'a i ka lā ho'oka'ahi

Nicholas Winfrey

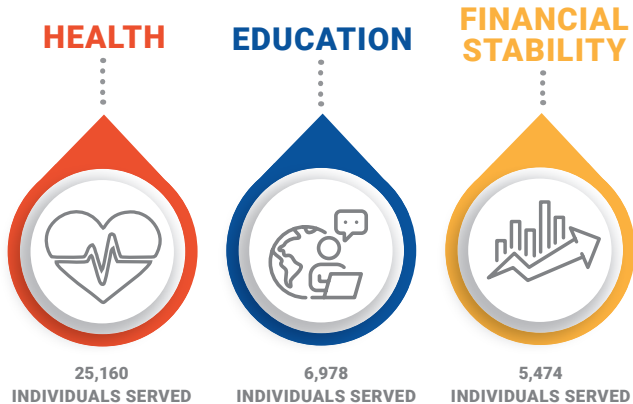
President & Chief Professional Officer

HIGHLIGHTS OF THE YEAR



MAUI UNITED WAY IN YOUR COMMUNITY

For more than 75 years Maui United Way (MUW) has safeguarded our Maui Community, ensuring that non-profit services are available for those in need! Together, with our community partners, we continue to impact sustainable change and provide hope for a better tomorrow. Last year, over 37,000 non-profit services were provided to people in need through the generous support of our community. MUW is committed to improving the lives and futures of individuals, children, and families by strategically investing in programs that support the needs of EDUCATION, FINANCIAL STABILITY, and HEALTH. MUW partners with 39 partner agencies to provide critical non-profit programs; mobilizes hundreds of volunteers to give back; and advocates for positive change. Maui United Way is inspiring hope, improving lives and creating opportunities for a better tomorrow in Maui County every day.



TOOLS FOR SCHOOL DRIVE

This year, our Annual Tools for School Drive took a different approach to address the emerging needs of our keiki in response to the COVID-19 pandemic. With the help of our generous sponsors, donors, and supporters we were able to include face masks, hand sanitizer spray, and antibacterial soap to our supply kits. Although our community is hurting right now, those who were able to give definitely stepped up and we can't thank all our donors enough. A special Mahalo to our sponsors Pacific Media Group and HMSA for their continued support for the drive. We were able to support over 600 keiki with supply kits and have more supplies to support families in-need throughout the school year. Kamaha'o of Kamehameha Maui and Emma of Maui Waena served as our new student coordinators and they did a great job at going out in the community and advocating for their schoolmates in-need. Mahalo for your generosity!



HOLIDAY TOY DRIVE

Maui United Way and Friends of the Children's Justice Center (FCJC) with sponsorship from Pacific Media Group (PMG) and Queen Ka'ahumanu Center held their 2020 Holiday Toy Drive to benefit children in need on Maui, Lāna'i, and Moloka'i. With the overwhelming support of the Maui community, they were able to reach their goal and filled 100% of requests and distributed more than 2,300 toys. All toys were distributed through Maui United Way's non-profit partner agencies as well as the partners of Friends of the Children's Justice Center. "Special mahalo to our sponsor PMG, Big Brothers/Big Sisters of Maui, JW Cameron Center, Kaiser Permanente Lahaina Clinic, Seabury Hall, County of Maui and every donor and partner for your support in making this the most successful toy drive to date," said Maui United Way President and CPO Nicholas Winfrey. Makana Nunes, Community Impact Coordinator for Maui United Way shared, "We had special help again this year from a very generous elf who donated over 200 hours of her time to help with the distribution of the toys to our Partner Agencies. We really can't thank her enough for all her hard work and dedication."



#DOMOREGOODMAUINUI

Maui United Way launched its “Do more good” Campaign during its 75th Anniversary Virtual Pau Hana in October. The Maui community was asked to provide support to Maui United Way, any local non-profit, or even a neighbor. The campaign asked people to pledge 75 hours of volunteering, a \$75 donation to Maui United Way or any non-profit, or sign up in the workplace campaign to donate at least \$7.50 per pay period. Everyone who pledges to “Do more good” will receive a shirt designed by Hawaii’s Finest to show the world they’re ready to provide a hand up to their community. Please use the hashtag #domoregoodmauinui in any social media posts where you feel you or someone you know is doing more good. Fill out the pledge form on our website so we can get you a t-shirt. We know a lot of good has, and is, being done in Maui County and this is our way to celebrate you!

MAUI UNITED WAY’S NEW VEHICLE DONATION PROGRAM

Maui United Way now accepts vehicle donations! Vehicle donation pickup is always free to you and most vehicles can be picked up within 24-72 hours. You’ll receive an initial car donation receipt upon pickup and then the CARS Team will work to turn your car into cash to support Maui United Way. Once your vehicle is sold, they will provide you proper tax forms in time to file. The Donor Support Representatives are available seven days a week to assist you throughout the process. To donate your vehicle or learn more about our program, please visit our website.

MAUI UNITED WAY’S SAFETY NET FUND CONTINUES TO ASSIST THE COMMUNITY



Maui United Way created the Emergency Safety Net Fund as a proactive response to the rapidly escalating need due to COVID-19. We launched this fund in March 2020 with \$75,000 from our reserved assets to immediately seed this with the hope that other corporate partners would join us in our effort. Since then, we received support from Hawaiian Electric Company, Sentry Insurance Foundation, the Bendon Family Foundation, and the community to raise over \$245,000. Maui United Way launched PHASE 2 of the Emergency Safety Net Fund as the need due to COVID-19 continued to escalate. In Phase 1, we were able to support 26 agencies. In Phase 2, we focused our funding to bridge the gaps in the areas of food security, child care, and personal protective equipment. Our non-profit community presented these areas of need through our Phase 1 Safety Net Fund reports and the Safety Net Survey. We don’t know what the future is going to look like but we do know that when we work together, everything will be okay.



HAWAII UTILITY ASSISTANCE PROGRAM

Hawaiian Electric pledged \$2 million in shareholder money from its parent company, Hawaiian Electric Industries (HEI), to the Hawai’i Utility Bill Assistance Program. This statewide program was created to help Hawai’i residents who are financially affected by the pandemic and who have fallen behind on their payments to electric, water, sewer, and gas utilities. Maui United Way led the distribution of these funds for Maui County. Over 670 Maui County residents applied. A total of \$252,000 was distributed directly to utility companies which served 451 families with an average payment of \$560. Special mahalo to our Office Manager, Sherry Yamashita, for the countless hours she spent processing each application and getting these funds out quickly to serve our Maui families in need.

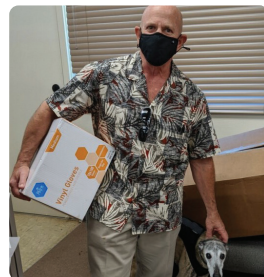
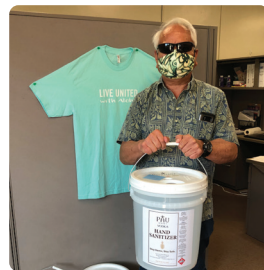


CRUA FUNDS

The Covid Rent and Utility Assistance (CRUA) funding is a statewide fundraising effort put on by the Hawaii Island United Ways. These funds are in addition to our county's HELP assistance and families in-need are eligible to apply for both. The CRUA program is being managed by one of our partner agencies, Catholic Charities Hawaii, and they will be able to assist you with the application. The funding cap per family is \$1000 in assistance and there are still funds available. If you or someone you know needs financial assistance with rent or utilities, please contact Catholic Charities Hawaii at 873-4673.

HAND SANITIZER AND PPE DISTRIBUTED TO THE NONPROFIT COMMUNITY THROUGH MUW

Maui United Way received generous grants from Hawai'i Community Foundation. The first one was to purchase hand sanitizer and the others to purchase PPE items to distribute to nonprofit organizations throughout Maui County to keep their staff, offices, and clients safe and healthy. MUW purchased sanitizer from PAU Maui Vodka and they generously donated additional containers to help those in need. Since June 2020, we have been able to provide over 268 gallons of hand sanitizer, and over 110,000 PPE items to over 60 nonprofit organizations. We were also able to supply much needed PPE items to the islands of Lāna'i and Moloka'i.



Get Connected. Get Help.™



MAUI'S NEW 211 OPERATOR

With many people needing assistance due to the ongoing COVID-19 pandemic, Maui United Way created a 211 helpline position that is dedicated to serving Maui County. The position for Maui was created in partnership with Hawai'i Community Foundation, Aloha United Way, County of Maui Workforce Development and Nuestro Futuro Foundation. Tatiana Medeiros joins us as an extension of our partnership with Aloha United Way's 211 program on Oahu. Tatiana has been taking calls from our community since December of 2020. The needs have ranged from medical assistance, COVID testing, and vaccination information, to emergency situations dealing with community members in dire need. She's taking over 50 calls a day and is a direct connection for those seeking services to those providing them here in our community. This is the first outer-island 211 position but there is hope that it will open the door to having 211 positions for the Big Island and Kaua'i. "As this crisis continues, needs are growing and changing on a daily basis," said Maui United Way President and CPO Nicholas Winfrey. 211 is a free, confidential referral and information helpline and website that connects people of all ages from all communities to the essential health and human services they need. To speak with someone, the lines are available 7 days a week, from 7am-10pm. To access 211 online, visit AUW211.org.



OHANA FUELS "FUEL UP. DO GOOD."

Maui United Way was the beneficiary of Ohana Fuels' 'Fuel up. Do good.' Program for the first quarter of

2021. Ohana Fuels partners with nonprofit organizations serving the needs of the local community and donates a portion of the proceeds from every gallon of gasoline purchased at Ohana Fuels stations in that community. First quarter sales for 2021 at the Maui Ohana Fuels locations resulted in a total of \$5,327.10. That total, combined with car washes that earned \$1,083.00, created a total donation of \$6,410.10 for Maui United Way. "At Ohana Fuels we are proud to support local nonprofit organizations through our 'Fuel up. Do good.' community giving program." said Kimo Haynes, President of Hawaii Petroleum. "We value the exceptional work these nonprofits do to help local residents and neighborhoods. We look forward to offering continued support in the community through our sponsorship programs."

MAUI UNITED WAY GRANTEE COVID PULSE REPORT

During the last year, Maui County's social sector has been a valuable safety net for our entire community. Maui United Way conducted a survey to better understand the work that has been done, what's on the horizon, and the struggles that will come along with the work ahead. The online survey was completed by 44 of 49 Maui United Way grantees. Lisa Grove and Max Becker of Grove Insight headquartered on Lānaʻi wrote, fielded, and analyzed the results and did the work pro bono. Lisa Grove is a member of the Maui United Way board. The data was presented to partner agencies and supporters. Top sources of concern for these non-profits were funding for their organization and economically fragile members of the community. Staff and volunteer shortfalls, compassion fatigue, and the difficulty of serving the community while working from home were all contributing factors for a strong need to focus efforts on mental health. There were silver linings because of the pandemic as well; grantees reported higher levels of innovation, higher standards for hygiene and cleanliness, and new ways to serve those in need. Respondents also noted a strong sense of community, including greater collaboration from other agencies.



MAUI UNITED WAY STAFF



NICHOLAS WINFREY
President & Chief
Professional Officer



ANGELA STEWART
Campaign &
Projects Coordinator



TATIANA MEDEIROS
Maui 211 Operator



SHERRY YAMASHITA
Office Manager



MAKANA NUNES
Community Impact
Coordinator

2020-2021 BOARD MEMBERS

LUKE BAILEY	Hawaii Gas
WILFRED CAMBRA	Walker Industries, Ltd.
ANDREA DEMETRAS	Retired Health Care Executive
LISA GROVE	Grove Insights
MARK FORNWALL	<i>Vice Chairman</i> – Retired
GERRY LUM	Maui Economic Opportunity, Inc.
WENDY MACAHELEG	Coldwell Banker Island Properties
LALAINÉ MANLAPAO	<i>Treasurer</i> – First Hawaiian Bank
ELLEN NASHIWA	<i>Secretary</i> – Maui Electric Company
LISA PAULSON	County of Maui
SIMON POOLE	<i>Chairman of the Board</i> – Goodfellow Bros., Inc.
JENNIFER SALISBURY	Valley Isle Enterprises, Ltd.
JENNIFER TAKAYESU	Aloha International Employment, Inc.
JACOB TAVARES	<i>Chairman of the Board*</i> – Mahi Pono
ALEX URBAN	Sentry Tournament of Champions/PGA
JASON WILLIAMS	Maui Wealth Management, LLC

*Served as Chairman of the Board from July 2020 to December 2020

2020-2021 MAHALO AWARDS

DEDICATION. COMMITMENT. SELFLESSNESS.

Each year, individuals and companies that make exceptional commitments to Maui United Way's campaign are honored with the Mahalo Awards. Congratulations to the 2020-2021 award winners for their dedication and support this campaign year. Please join us in saluting these fine awardees for creating hope for a better tomorrow.

OUTSTANDING FOUNDATION AWARD:

Bendon Family Foundation

COMMUNITY BUILDER AWARD:

Maui Electric Company

CORPORATE CONTRIBUTOR OF THE YEAR:

Sentry Insurance

BANK OF THE YEAR:

First Hawaiian Bank

PARTNER AGENCY OF THE YEAR:

Hana Arts

CAMPAIGN OF THE YEAR:

Goodfellow Bros., Inc.

CAMPAIGN AWARD OF EXCELLENCE:

HC&D

CAMPAIGN EXCELLENCE AWARD:

Enterprise Holdings

BOARD MEMBER OF THE YEAR:

Ellen Nashiwa

THE HAND UP AWARD:

Nuestro Futuro Foundation

EXECUTIVE COMMITTEE

Jacob Tavares, *Chairman of the Board (July 2020 – Dec 2020)*

Simon Poole, *Chairman of the Board (Jan 2020 – June 2021)*

Mark Fornwall, *Vice Chair of the Board*

Lalaine Manlapao, *Treasurer of the Board*

Ellen Nashiwa, *Secretary of the Board*

FINANCE COMMITTEE

Luke Bailey

Wil Cambra

Lalaine Manlapao

Jennifer Salisbury

Jason Williams

INVESTMENT COMMITTEE

Luke Bailey

Wilfred Cambra

Lalaine Manlapao

Jennifer Salisbury

MARKETING AND FUNDEVELOPMENT COMMITTEE

Wendy Macaheleg

Ellen Nashiwa

Lisa Paulson

Jennifer Takayesu

Alex Urban

PARTNERSHIP COMMITTEE

Mark Fornwall, *Chair*

Andrea Demetras

Lisa Grove

Ellen Nashiwa

Simon Poole

2020-2021 COMMITTEE ROSTER

FINANCIAL STATEMENT

AUDITED FISCAL YEAR 7/01/19 - 06/30/20

ASSETS

CURRENT ASSETS

Cash and Cash Equivalents	\$413,968
Accounts Receivable	\$1,000
Pledges Receivable	
2019-2020 Campaign	\$157,011
2020-2021 Campaign	\$66,000
Grants & Foundation	\$15,503
Allowance for Uncollectible	(\$56,000)
Prepaid Expenses	\$6,349

Total Current Assets **\$603,831**

FIXED ASSETS

Building	\$0
Furniture & Equipment	\$55,985
Leasehold Improvements	\$0
Total Fixed Assets	\$55,985
Less Accumulated Depreciation	(\$55,985)

Net Fixed Assets **\$0**

OTHER ASSETS

Investments	\$2,016,601
-------------	-------------

Total Other Assets **\$2,016,601**

TOTAL ASSETS **\$2,620,432**

LIABILITIES & NET ASSETS

CURRENT LIABILITIES

Accounts Payable	\$24,844
Payroll Liabilities	\$10,429
Paycheck Protection Loan	\$58,400

Total Current Liabilities **\$93,673**

TOTAL LIABILITIES **\$93,673**

NET ASSETS

Net Assets without Donor Restriction	\$691,283
Net Assets with Donor Restriction	\$1,835,476

Total Net Assets **\$2,526,759**

TOTAL LIABILITIES & NET ASSETS **\$2,620,432**

EXCEPTIONAL DONORS WHO HAVE INVESTED \$1,000 OR MORE TO THE CURRENT CAMPAIGN.

Rowena Dagdag-Andaya	Robert Maxfield
Annabel Arase	Paul Mizoguchi
Brittani Capps-Balinbin	Ellen S. Nashiwa
Chris & Melissa Benjamin	Douglas Nicolas
Richard Bissen	Charles & Kathleen Oliveira
Linda & Charles Chandler	Lorrie A. Onaga
Leah Kadotani-Cornett	Benedict Ponce
Cindy & Mark Dankberg	Simon Poole
Alberta de Jetley	Mr. & Mrs. Ricky A. Purdy Sr.
Marada & Linda Decker	Leslie Resnick
Cyd Awai-Dickson	Christopher Reynolds
Michael B. Dolan	Frank Rocha
Sumner & Angela Erdman	Shari Sanches
Mark Fornwall	Kyle D. Sentinella
Tamar & Steve Goodfellow	Merle Minami-Shima
Elizabeth Grove	Sharon Suzuki
Celia Haines	Lynne Uchima
Lawrence & Mary Hughes	David J. & Susan Underwood
Karleen Hultquist	Ventura Ohana
Russell E. Johnson	Jacob W. Verkerke
Ronald Kawahara	Rick & Erin Volner
Shelee Kimura	Mason & Trudy Williams
Todd Macfarlane	Nicholas Winfrey
Cynthia Mattox	Catherine Yee

2020-2021 LEADERSHIP GIVERS

OUTSTANDING SUPPORTERS

OUTSTANDING BUSINESSES

combined with the support of their employees, foundations, and trust donors who have generously contributed to Maui United Way.

\$50,000-\$99,999

The Bendon Family Foundation
Nuestro Futuro Foundation

\$20,000-\$49,999

Atherton Family Foundation
County of Maui
First Hawaiian Bank/Foundation
Hawaii Community Foundation
Hawaiian Electric Industries
Charles & Mitch Ota Foundation
Sentry Insurance Foundation

\$10,000-\$19,999

Enterprise Holdings Foundation
Goodfellow Bros., Inc.
IOTASK LLC
Kaanapali Ocean Resort
Charitable Trust
The Roy H. and Lorraine M.
Okumura Foundation
Walker Industries

\$5,000-\$9,999

ABC Stores
Robert W. Clark Charitable
Foundation, Inc.
HC&D
HMSA
Hawaiian Telcom
Matson Navigation
Company
Ohana Fuels
Seabury Hall
State of Hawaii

\$2,500-\$4,999

American Savings Bank
Grace Pacific Corporation
Hale Mahaolu
Maui Adult Day Care Centers
Maui Economic Opportunity
MDU Resources Foundation
Target

\$1,000-\$2,499

A & B Properties, Inc.
Aloha House
Arisumi Brothers
Central Pacific Bank
Haleakala Ranch
Hawaii Gas
Hawaiian Cement
Hawaiian Dredging &
Construction
ILWU Local 142
Kahului Trucking & Storage
Kamehameha Schools-Maui
Kiwanis Club of Kahului
Maui Oil Company
Moussally Medical Corp
R. W. Spangler, LLC
Women Helping Women

IN KIND GOODS/ SERVICES VALUED AT \$1,000 OR MORE:

J. Walter Cameron Center
Maui Electric Company
Pacific Media Group
Random Productions
Sentry Tournament of
Champions/PGA

MAKING AN IMPACT WITH OUR COMMUNITY PARTNERS 2020-2021 FUNDING

EDUCATION - HELPING CHILDREN AND YOUTH ACHIEVE THEIR POTENTIAL THROUGH EDUCATION



Best Buddies International \$6,702.50 Maui School Friendship Program	Kupu \$13,000.00 Hands-on Training in Conservation & Environmental Education for young adults
Big Brothers Big Sisters Hawaii, Inc. . . . \$8,276.15 One-to-One Mentoring for Youth	Lahaina Arts Guild \$10,500.00 Free Art Classes for children
Boys & Girls Clubs of Maui \$11,052.40 Ultimate Journey at the Club and in Life	Maui Family Support Services, Inc. . . . \$14,987.20 Early Head Start (EHS) - Early Childhood Education
Child & Family Service \$13,409.50 Maui Sexual Assault Prevention & Education	Maui Hui Malama \$13,000.00 Education Training Serving Maui's Youth
Girl Scout Council of Hawaii (Maui) . . . \$7,341.00 Girl Scout Leadership Experience	Maui Mediation Services \$8,855.50 Conflict Resolution Services & Training
Hana Arts \$13,000.00 Arts & Cultural Education in East Maui	Pa'ia Youth Council, Inc. \$5,865.00 Pa'ia Bay Café
IMUA Family Services \$17,041.14 Infant & Early Childhood Services	

INCOME - HELPING FAMILIES BECOME FINANCIALLY STABLE AND INDEPENDENT



Catholic Charities Hawaii \$9,979.00 Community of Hope Program	Ohana Makamae, Inc. \$7,108.00 Ka Mohala
Common Ground Collective \$13,000.00 Maui Foster Farming Project	PATCH-People Attentive to Children \$5,883.00 Cash for Caring
Habitat for Humanity Maui \$8,342.58 Homeownership Education & Financial Literacy	The Maui Farm, Inc. \$9,312.70 Family Strengthening Program
Hale Mahaolu \$13,000.00 Homeownership & Housing Counseling Program	The Salvation Army, Maui County \$11,906.30 Family Services Program
Ka Hale A Ke Ola Homeless Resource Centers, Inc. \$12,705.50 Employment Support Services	



HEALTH - IMPROVING PEOPLE'S HEALTH

Aloha House \$15,278.87 Medically Monitored Detoxification	Maui Youth and Family Services \$14,057.50 Substance Abuse Treatment for Adolescents
Alzheimer's Association Aloha Chapter (Maui) \$9,545.28 Education Programs on Alzheimer's Disease and Brain Health	Mental Health America of Hawaii, Maui \$13,058.50 Mental Health Education, Advocacy and Family Strengthening
American Lung Association \$10,000.00 Asthma Friendly Schools for Maui Keiki: A Comprehensive Approach	Mental Health Kokua \$13,382.50 Residential & Psycho-Social Rehabilitation Services
Feed My Sheep \$12,026.38 Mobile Food Distribution	Na Hoaloaha \$7,500.00 Escort Transportation Volunteer Program
Hospice Maui \$16,313.19 Hospice Care	Parents and Children Together (PACT) \$6,222.30 Maui Family Peace Center
Hui No Ke Ola Pono, Inc. \$11,000.00 Traditional Hawaiian Practices	Planned Parenthood of The Hawaiian Islands-Maui \$16,012.30 Sexual & Reproductive Health Care for Low Income Patients
La'akea Village \$13,000.00 Empowers People of all Abilities to Live, Work, Learn, Play, and Thrive Together	Women Helping Women \$16,205.80 Emergency Shelter & Support Programs for Victims of Domestic Violence
Lana'i Kina'ole \$13,000.00 Serves Clients in their Home Environments or at a Community Location	
Malama Family Recovery Center \$16,598.34 Therapeutic Living Program for Women	
Maui Adult Day Care Centers \$18,827.05 Elderly Day Care Services	





OUR VISION

To lead in uniting partners to provide a thriving, sustainable quality of life by effectively addressing Maui's most vital needs and inspiring people to give, advocate and volunteer.

OUR VALUES

- Promoting Integrity and Transparency
- Leading in Volunteerism
- Empowering our Community Partners
- Fostering Community Wellness
- Caring for 'Ohana



CHANGING LIVES & IMPROVING OUR COMMUNITY

MAUI UNITED WAY

95 Mahalani Street, Suite 24, Wailuku, HI 96793
808-244-8787 • www.MauiUnitedWay.org